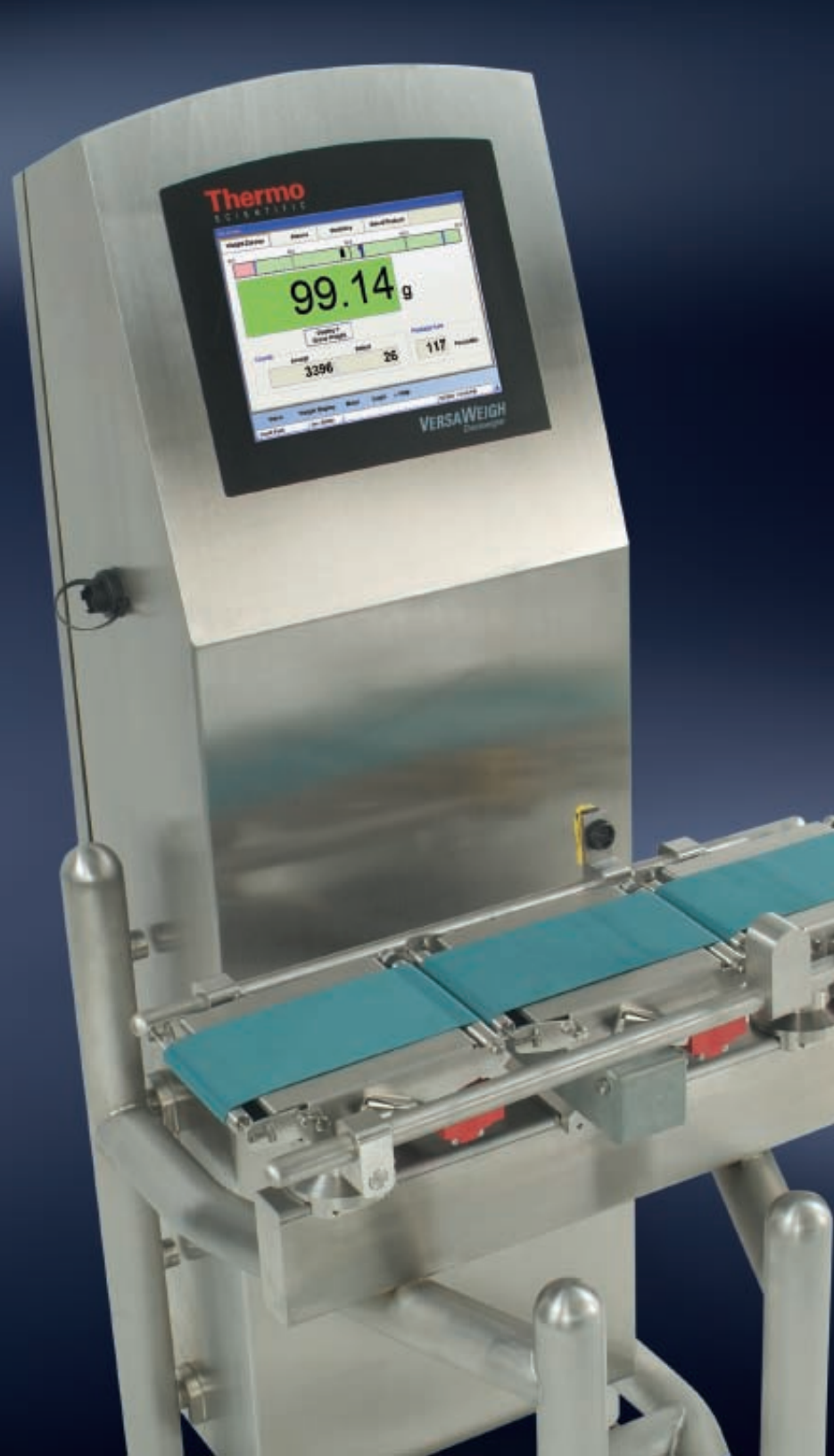


A Versatile Checkweighing Solution



Thermo Scientific VersaWeigh®

We Understand Your Challenges

You spoke. We listened. You need to increase productivity, improve efficiency, minimize downtime and lower operating costs. You want a checkweigher that's accurate, easy to use, easy to clean, easy to maintain and can handle a broad range of applications. And now you have it: the Thermo Scientific VersaWeigh.



Shown at right the Thermo Scientific VersaWeigh model 40-100
400-mm (15.7-in) wide belt, 10 kg capacity
with 2,010-mm (79.1-in) overall length and IP-66 option pack.

On the cover Thermo Scientific VersaWeigh model 10-015 model
100-mm (3.9-in) wide belt, 1.5 kg capacity, 610-mm (24-in) overall length



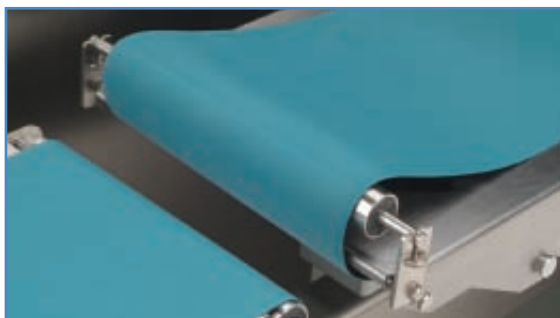
A Versatile Checkweigher to Meet Your Needs

VersaWeigh is a new generation of checkweighers from the global leader in scientific and process instrumentation. We've been in the checkweighing business for more than 50 years, and we've built upon our vast experience and strong legacy (former Ramsey and Icore brands) to bring you a versatile checkweigher under our new product brand, Thermo Scientific.

With VersaWeigh, you benefit from:

Sanitary Design — Designed for clean in place; flat surfaces avoided to reduce risk of product buildup; minimized footprint; routine sanitation of the system in five minutes or less.

Ease of Maintenance — Rapid release conveyors and belts; quick disconnect cabling; DIN-rail mounted networked modular electronic architecture; no tools required for belt replacement or replacement of most electronic modules; most repairs done in less than 30 minutes.



Durable Design — Full stainless steel frame, electronics enclosure, and conveyor beds; high-torque sealed brushless DC motors; trouble-free operation with minimal maintenance.

Accuracy and Reliability — Better accuracy at faster speeds than previous generation models.

Ease of Use — Microsoft® Windows® XP operating system; large, easy-to-read, color touch-screen operation; configurable security access levels.

Versatility — the VersaWeigh family covers a broad range of your checkweighing applications from lightweight packages to packs up to 10 kg, with a standard architecture and standard HMI.

Future-proof Technology — parts compatibility with all Thermo Scientific checkweighers, general purpose and specialty.

OEM Integration — Our modular weigh-engine approach enables integration into larger packaging systems.

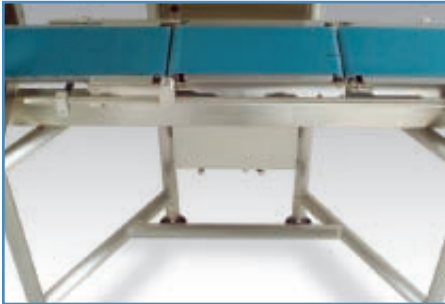


Your Complete Standard Solution

Sanitation

VersaWeigh's unique trapezoid frame eliminates bacteria traps and provides a hygienic design that is designed for easy sanitization:

- Stainless steel construction of frame, cabinet and conveyor beds with optional stainless steel rollers and loadcell.
- Open frame provides easy access for cleaning.
- Rapid-release belts facilitate tool-less slackening of the conveyor belts for cleaning.
- Rounded tube and cabinet surfaces virtually prohibit any buildup of product that could present a sanitation risk.
- IP-65 rated, with optional IP-66 configuration.



Technology

VersaWeigh uses a fully upgradeable technology platform:

- 10.4-in XGA color touch-screen
- Windows XP based user interface
- Independent weigh-engine improves filtering, stability, control.
- Independent weighing engine uses a powerful Blackfin™ digital signal processor supporting proprietary signal processing algorithms enabling our new Thermo Scientific AutoCalc™ system which eliminates complex setup requirements.
- Networked controller modules utilize latest technology CANbus and Ethernet networks to provide easy module exchange and simple repair.

Performance

- Accuracy equal to or better than the requirements of European, North American or international standards.
- Exclusive Thermo Scientific DBSVAC™ (Dynamic Broad Spectrum Vibration Analysis and Compensation) eliminates ambient environmental influences to optimize performance
- A new standard of accuracy at line rates surpassing the capabilities of competitive checkweighers.
- Accuracy standards maintained over time and environmental changes thanks to proprietary software, including advanced automatic-zero algorithms.

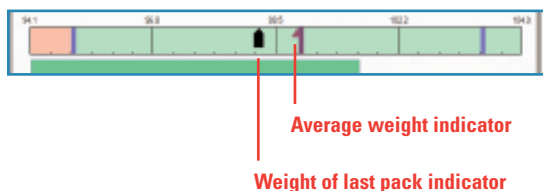
Maintenance

When maintenance is required, VersaWeigh is designed to return to full production quickly using innovative features such as:

- Powerful brushless DC motors and sealed-for-life bearings which require no routine maintenance.
- Rapid-release mechanical and electrical conveyor attachments which allow conveyors to be removed in a matter of seconds.
- PSC (Parameter Storage Card) permits motor controllers to be changed with no setup or re-programming requirement.
- Networked Modular Electronic Architecture (Thermo Scientific NMEA™) enables virtually any electrical or electronic module being able to be replaced without the use of tools.
- Tool-less thumb-screw adjustment of belt tracking, with captive conveyor rollers makes belt adjustment or changing a snap!



SmartZone™ Indicator
(shown with three-zone configuration)



Shown here is the Thermo Scientific VersaWeigh model 40-100 with optional Thermo Scientific APEX 300 Metal Detector



Other Features

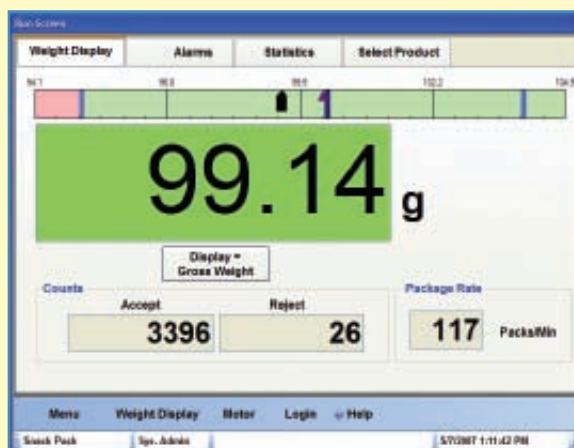
Everything you've come to expect from a checkweigher but in an easier-to-use product! VersaWeigh innovations include:

- Enhanced AutoCalc™ capability – taking the automatic setup introduced in our previous generation products to a whole new level, almost eliminating any need for formal setup training!
- Contextual help screens to guide operation.
- User configurable operator level – controlled access for complete security and data integrity.
- Available expanded statistics and graphs provide detailed views of production line performance.
- One hundred standard product memories, expandable, searchable by product or name.
- Thermo Scientific SmartZone™ display for snapshot product information on the main screen.
- Large, high visibility weight display is supplemented by a bright 'good/bad' or 'go/no-go' indicator; similar to the revolutionary display introduced in the Thermo Scientific EZx™ X-ray inspection product.

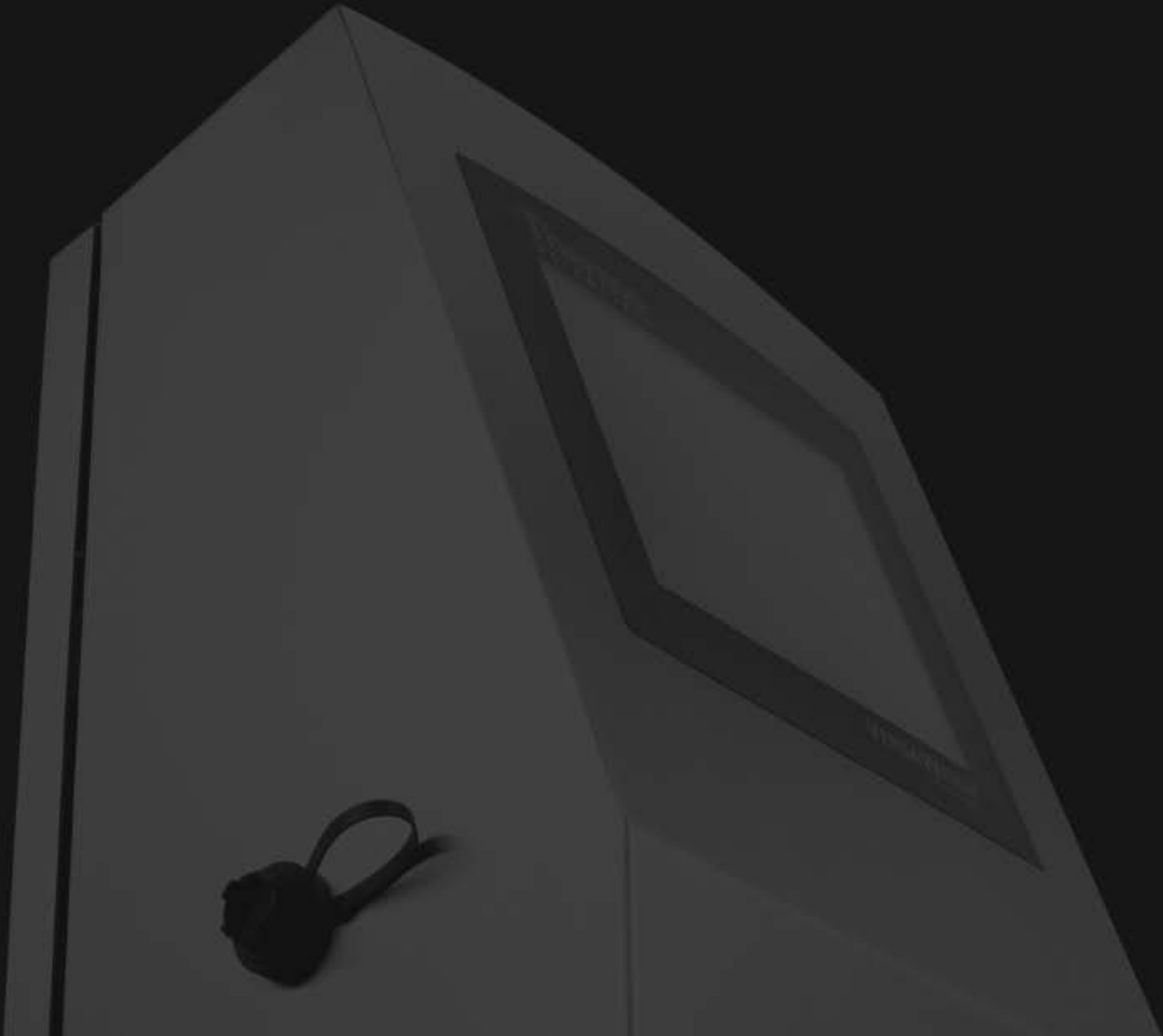
Your Complete Expandable Solution

Building on a foundation of standard features, the Thermo Scientific VersaWeigh offers options to expand capabilities to create application-specific solutions according to your needs. A wide variety of options are individually available, but for convenience common selections are available in groups, including:

- IP-66 option pack
- Electrical option pack
- Power-user option pack
- Pharma option pack
- Reject integrity option pack
- Combo (combination metal detector/checkweigher system) utilizing the Thermo Scientific APEX™ advanced metal detection capabilities.



Standard main weight display screen
(shown with three-zone configuration)



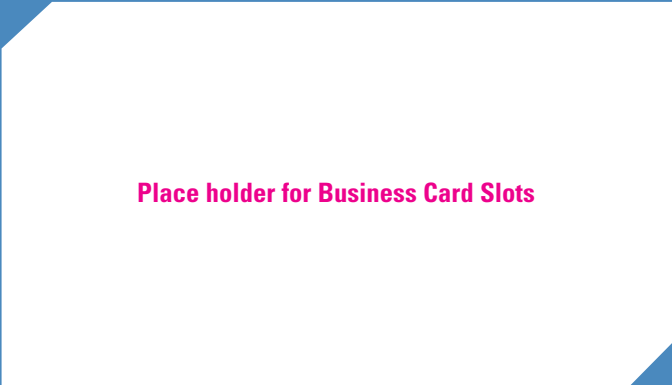
Other Thermo Scientific weighing and inspection products and services

Products

- X-Ray contaminant detection
- X-Ray product integrity inspection
- Metal detection
- General purpose chain and belt checkweighers
- Specialty canning, pharmaceutical and warehouse checkweighers
- Process monitors (e.g., CO₂ in beverages)

Services

- Various levels of service support contracts
- On-site/off-site product inspection services
- Start-up, site-survey, commissioning
- Validation, factory acceptance testing
- Capital purchase leasing
- Product testing services



Place holder for Business Card Slots

Thermo Scientific VersaWeigh

General Specifications																							
Line Speed	Models up to 3.0 kg (6.61 lb) capacity: Up to 120 m/min (394 ft/min) Models over 3.0 kg (6.61 lb) capacity: Up to 90 m/min (295 ft/min) <i>Pack rates dependant on package length and weigh-table length</i>																						
Accuracy	Systematic error (average error): typically ±0.01% package weight Display resolution: rounding to 0.1, 0.01, 0.02, 0.05, or 0.005 units Random error: To R51 International Standards, MID European Standards and Handbook-44 US standards or better <i>Actual accuracy may be less or greater depending on package weight, speed and stability</i>																						
Standard Configuration	Three belt conveyors (infeed, weigh-table, outfeed)																						
Environmental Specifications																							
Electrostatic Discharge	To EN61000-4-2																						
Operating Temperature	0°C to +40°C (+32°F to +104°F)																						
Storage Temperature	-20°C to +60°C (-4°F to +140°F)																						
Relative Humidity	10% - 90% non-condensing																						
Pollution Degree	Pollution degree II																						
Ingress Protection	IP-65 standard (IP-66 optional)																						
Services Specifications																							
Electrical	90 - 250 VAC, 50/60 Hz																						
Air	Dry, 5.5 - 6.9 bar (80 - 100 psi)																						
Available Approvals	CE low voltage directive; CE machinery safety directive; CSAUS; Complies with EC directive 2002/95/EC																						
Material and Finish																							
Electrical Enclosure	304-grade stainless steel, 4b finish																						
Frame	304-grade stainless steel, 4b finish																						
Conveyor Beds	304-grade stainless steel, 4b finish																						
Roller Shafts	304-grade stainless steel, 4b finish																						
Rollers	Aluminum standard; 304-grade stainless steel optional																						
Load Cell	Aluminum standard; 304-grade stainless steel optional																						
Beltting	Urethane (green) standard; FDA-approved urethane (blue) optional																						
Other Specifications																							
Weight Classification Zones	3 standard; 5 optional																						
Product Recipe Memories	100 standard; 400 optional																						
Product Features																							
	<table border="0"> <thead> <tr> <th>Standard</th> <th>Optional</th> </tr> </thead> <tbody> <tr> <td>Automatic zero correction</td> <td>Range of reject devices</td> </tr> <tr> <td>Automatic daylight savings time</td> <td>Reject verification</td> </tr> <tr> <td>Windows XP HMI technology</td> <td>Infeed/outfeed transfer belts</td> </tr> <tr> <td>BlackFin DSP technology</td> <td>Remote mount HMI</td> </tr> <tr> <td>Quick release modules</td> <td>Ethernet communications</td> </tr> <tr> <td>Auto-speed control with override</td> <td>Serial data link communications</td> </tr> <tr> <td>Brushless DC motors</td> <td>Advanced statistics & graphs</td> </tr> <tr> <td>USB-stick data export</td> <td>Consecutive rejects output</td> </tr> <tr> <td>'No-gap' detection/rejection</td> <td>Audible/visible alarms</td> </tr> <tr> <td>Configurable fault reporting</td> <td>Draft covers/reject covers, bins</td> </tr> </tbody> </table>	Standard	Optional	Automatic zero correction	Range of reject devices	Automatic daylight savings time	Reject verification	Windows XP HMI technology	Infeed/outfeed transfer belts	BlackFin DSP technology	Remote mount HMI	Quick release modules	Ethernet communications	Auto-speed control with override	Serial data link communications	Brushless DC motors	Advanced statistics & graphs	USB-stick data export	Consecutive rejects output	'No-gap' detection/rejection	Audible/visible alarms	Configurable fault reporting	Draft covers/reject covers, bins
Standard	Optional																						
Automatic zero correction	Range of reject devices																						
Automatic daylight savings time	Reject verification																						
Windows XP HMI technology	Infeed/outfeed transfer belts																						
BlackFin DSP technology	Remote mount HMI																						
Quick release modules	Ethernet communications																						
Auto-speed control with override	Serial data link communications																						
Brushless DC motors	Advanced statistics & graphs																						
USB-stick data export	Consecutive rejects output																						
'No-gap' detection/rejection	Audible/visible alarms																						
Configurable fault reporting	Draft covers/reject covers, bins																						

©2007 Thermo Fisher Scientific Inc. All rights reserved. Microsoft and Windows are either registered trademarks or trademarks of Microsoft Corporation in the United States and/or other countries. BlackFin is a trademark of Analog Devices, Inc. All other trademarks are the property of Thermo Fisher Scientific Inc. and its subsidiaries. Results may vary under different operating conditions. Specifications, terms and pricing are subject to change. Not all products are available in all countries. Please consult your local sales representatives for details. Literature Code P1.0049.0607

Argentina +54 (0) 11 4334 3827 +54 (0) 11 4334 9159 fax	France +33 (0) 160 92 48 00 +33 (0) 160 92 49 00 fax	Mexico +52 (01) 55 5638 0237 +52 (01) 55 5639 2227 fax	United Kingdom +44 (0) 1788-820300 +44 (0) 1788-820301 fax
Australia +61 (0) 8 8150-5300 +61 (0) 8 8234-5882 fax	Germany +49 (0) 208-824930 +49 (0) 208-852310 fax	Netherlands +31 (0) 76-579-5555 +31 (0) 76-571-4958 fax	United States +1 (800) 227-8891 +1 (763) 783-2525 fax +1 (763) 783-2500 direct
Canada +1 (905) 888-8808 +1 (905) 888-8828 fax	India +91 (20) 6626 7000 +91 (20) 6626 7001 fax	Poland +48 (0) 22 651 75 30 +48 (0) 22 651 75 35 fax	
Chile +56 (0) 2-335-3388 +56 (0) 2-335-1590 fax	Italy +39 05 217886-1 +39 05 212729-14 fax	South Africa +27 (0) 11-609-3101 +27 (0) 11-609-3110 fax	
China +86 (0) 21 6865 4588 +86 (0) 21 6445 1101 fax	Malaysia +60 (0) 3 5122 8888 +60 (0) 3 5121 8899 fax	Spain +34 91-484-5954 +34 91-661-5572 fax	